



CLAYTON
PRECISION ENGINEERING



Suppliers of precision components for over 50 years

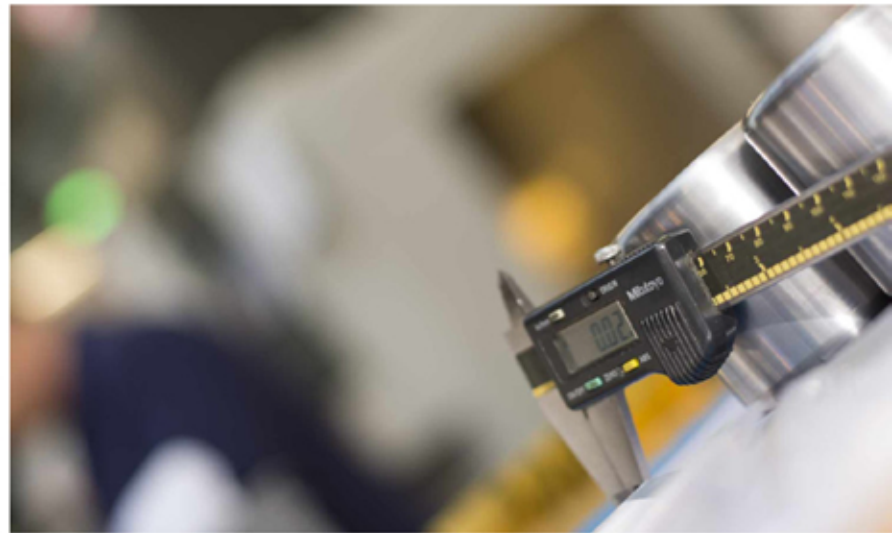
Clayton Precision is one of the South East's foremost supplier of precision components and assemblies to a broad range of industry sectors.

With over fifty years of experience we can provide you with complete precision engineering solutions to any of your project/needs.

Some of the sectors served include The Oil and Gas industries, Nuclear and Scientific along with Medical research and development companies.

Why use Clayton Precision?

- Over 50 years experience
- 5 axis machining
- 10,000 sq ft facilities
- 2 modern units
- cnc milling
- cnc turning
- Assembly
- Sub Con services
- Low and high volume work
- CAD Cam facilities
- Quality ISO 2008/2009 approval
- World class service



CNC TURNING



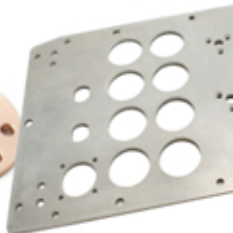
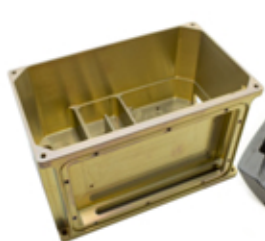
CNC MILLING



CAD CAM



SUB CON



CLAYTON
PRECISION ENGINEERING

Clayton Precision Engineering Co. Ltd
Clock Tower Road, Isleworth, Middlesex, TW7 6DT

Telephone: 020 8568 9527

Facsimile: 020 8569 9526

www.claytonprecision.com



SCAN TO OPEN WEBPAGE